

GVEA's Biggest Loser Challenge

Losers Win Big

With the approach of winter comes higher energy bills. There's still time to take control and improve the efficiency of your home.

Less energy usage – electricity as well as home heating – means you can minimize the effects rising fuel prices have on your home.

What can you do? Actually, quite a bit. And there are several things you can do today without making a trip to the hardware store.

Trim Your Bill

By shedding unwanted kilowatt-hours, you can lower your usage. Make some relatively simple changes and see how much you can lower your usage.

For example, do you know how many light bulbs you have in your home? How many have you changed to compact fluorescent lamps (CFLs)?

CFLs provide the same amount of light but use 75 percent less electricity. They cost more up front, but they save you money every month on your electric bill and they last 10 times longer than incandescent bulbs.

Assume you have five light fixtures in use an average of four hours a day. You replace each 60-watt incandescent bulb with a 15-watt CFL. You save 27 kilowatt-hours a month. That equates to \$5.40 per month.

Some energy saving efforts don't require a trip to the hardware store, but simply a change of behavior. Here are two examples to start with today:

- Turn off your computers when they're not in use and especially overnight
- Use the "no heat" cycle on your dishwasher and air dry dishes

The Challenge

GVEA's Biggest Loser Challenge starts with your electric bill. The *Usage in KWH* chart gives you some good information about your usage patterns.

The chart provides 13 months of your usage history. Compare the current month to the same month of the previous year. Our focus here is the *Avg. kWh* line. This represents the daily average usage that month.

Challenge your family to lower the daily average number of kilowatt-hours you use. Start now to see how much you can decrease your kWh usage by the time you receive your next bill. How does your August 2008 daily average compare to your August 2007 one? Keep watching your bills as you implement energy saving ideas.

Check out our *Room-By-Room Energy Saving Checklist* to see how many

tips you can incorporate. Involve your whole family and watch the unwanted kilowatt-hours melt away.

Losers Can Win \$50

Do you have a Biggest Loser success story? Or maybe you've discovered an energy saving tip of your own. Send your stories and tips to GVEA and be entered into a drawing for five \$50 gift certificates for electricity.

Write to Golden Valley Electric Association, PO Box 71249, Fairbanks AK 99707 or email info@gvea.com.

Winners will be drawn at random on August 31, 2008.

By entering your success story or energy saving tip, you grant Golden Valley the right to share your information. If we use your entry in GVEA communications, we will acknowledge the submitter.



Room-By-Room Energy Saving Checklist

Use this checklist to learn simple ways to save big. Even those whose budgets are stretched too tightly already can implement several of these changes.

Challenge yourself. See how many of these no-cost or low-cost options you can implement this month. Then make a plan and a budget for some of the more time and labor intensive energy efficiency upgrades.

In every room

Lighting

- Change incandescent light bulbs to compact fluorescent lamps
- Use only CFLs designated dimmable in dimmable fixtures
- Use occupancy sensors and timers
- Replace several small bulbs with one large bulb
- Decorate wall surfaces with light, reflective colors
- Keep fixtures and covers clean

Phantom appliances

- Unplug when not in use and especially when you're on vacation

Computers

- Put all electronics on one power strip; turn off when not in use
- Turn off your computers overnight

Electric heaters

- One 1,200-watt electric heater costs 20¢ per hour to run
- If you must use electric heaters, do so sparingly; costs add up quickly.

Kitchen

Electric range

- Fit pans to burner size
- Use lids on pans to retain heat
- Use small appliances like crock pot or microwave
- Pre-heat oven only five minutes

Dishwasher

- Wash full loads
- Wash with energy-saver cycle
- Dry with "no heat" cycle

Refrigerator

- Keep 3/4 to 7/8 full for efficiency
- Set refrigerator temperature at +34° to +38° / Freezer 0° to +5°
- Clean coils every three months
- Locate away from heat sources
- Replace with Energy Star model

Bedroom

Heated water bed

- Place 1½" to 2" foam pad on top
- Cover with heavy quilt
- Insulate sides and bottom

Bathroom

- Install low-flow fixtures
- Repair leaky faucets promptly
- Showers use 50 percent less water than baths

Utility Room

Electric water heater or storage tank

- Set water heater to 120° to 130°F
- Wrap water heater and pipes
- Flush sediment regularly
- Install a timer
- Use tempering tank

Electric dryer

- Dry full loads
- Do multiple loads at a time
- Clean lint screen
- Choose moisture sensor model
- Air dry when possible

Washing machine

- Wash with cold water
 - Pre-soak heavily soiled loads
- ### Freezer
- Defrost whenever 1/4" build up
 - Set thermostat 0° to +5°F

Major appliances

- Maintain your appliances, especially your furnace or boiler. Well maintained appliances operate more efficiently.
- Replace aging appliances with Energy Star models

Exterior

Yard light

- Use high pressure sodium bulbs
- Install photocell motion detectors

Primary headbolt

- Well-maintained vehicles need only two to three hours of preheating
- Install a timer or switched outlet
- Match heater to vehicle size

Heat tape

- Reduce wattage if cold water initially comes out warm

Beyond electricity

- Insulate and weatherize your home
- Install a setback thermostat
- Block drafts with foam gaskets on exterior wall outlets and switches
- Consider purchasing a more fuel efficient vehicle

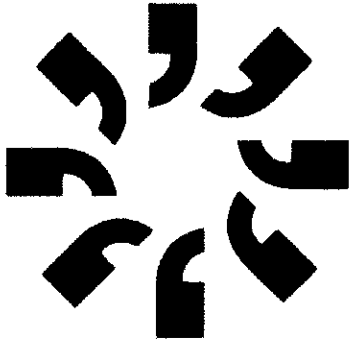
Additional resources:

PORTAL – The Portal on Retrofits
Training and Loans 455-HEAT
326 Driveway Street behind the
Fairbanks Daily News-Miner
Monday - Friday, 10 a.m. to 7 p.m.
Saturday, Noon - 5 p.m.



Your Touchstone Energy® Cooperative

452-1151 • 1-800-770-GVEA • www.gvea.com



Our Energy, Our Future

For Interior Alaska



WHY COSTS ARE SKYROCKETING

We know this latest increase in electric rates is staggering for our members. If you feel like your electric bill has doubled in the past five years, you're right. There are two main reasons for this.

The most significant cause is the rising price of oil. While GVEA has the most diversified fuel mix of all Railbelt utilities, we still rely heavily on oil-based power generation.

You pay higher prices at the gas pump and we see them at our power plants. The average residential member has incurred an additional \$72 in the past five years attributed directly to the rising price of oil.

Of lesser impact is the addition of numerous capital projects in recent years. These improved reliability and helped us prepare for growth. The impact of these projects has added \$17 to the average residential member's bill.



WHAT WE'RE DOING ABOUT IT

While we can't control the cost of fuel, our dispatchers monitor power supply around the clock and we continually use the most economical source available.

Our newest and most efficient power plant helps reduce this impact. The North Pole Expansion Power Plant burns 3,500 gallons per hour to produce 60 megawatts.

By contrast, the older North Pole units burn 4,300 gallons per hour to produce the same amount of power. The new plant saved members \$16 million in 2007.

Even with the most diversified fuel mix of the Railbelt utilities, we need even greater diversity. A few years ago, we had just five fuel options. Now we have at least a dozen options we're exploring.

These options include the bullet line, HCCP, AGIA, Susitna, LNG and a coal gasification plant with the Fairbanks North Star Borough. We're also evaluating renewable sources. Any of these options will take time and money to develop.



WHERE YOU CAN HELP

Take control of your electric usage and start lowering your energy costs.

- ✓ Use compact fluorescent bulbs.
- ✓ Put a timer on your water heater.
- ✓ Turn off computers overnight.
- ✓ Maintain appliances.
- ✓ Replace aging appliances with Energy Star models.
- ✓ Unplug phantom appliances when not in use.
- ✓ Insulate your home.
- ✓ Install a setback thermostat.
- ✓ Schedule a HomeSense audit.

GVEA is working with our legislators to find ways of reducing costs. In addition Governor Palin recently unveiled a short term energy plan. Learn more at www.gov.state.ak.us/archive.php?id=1223.

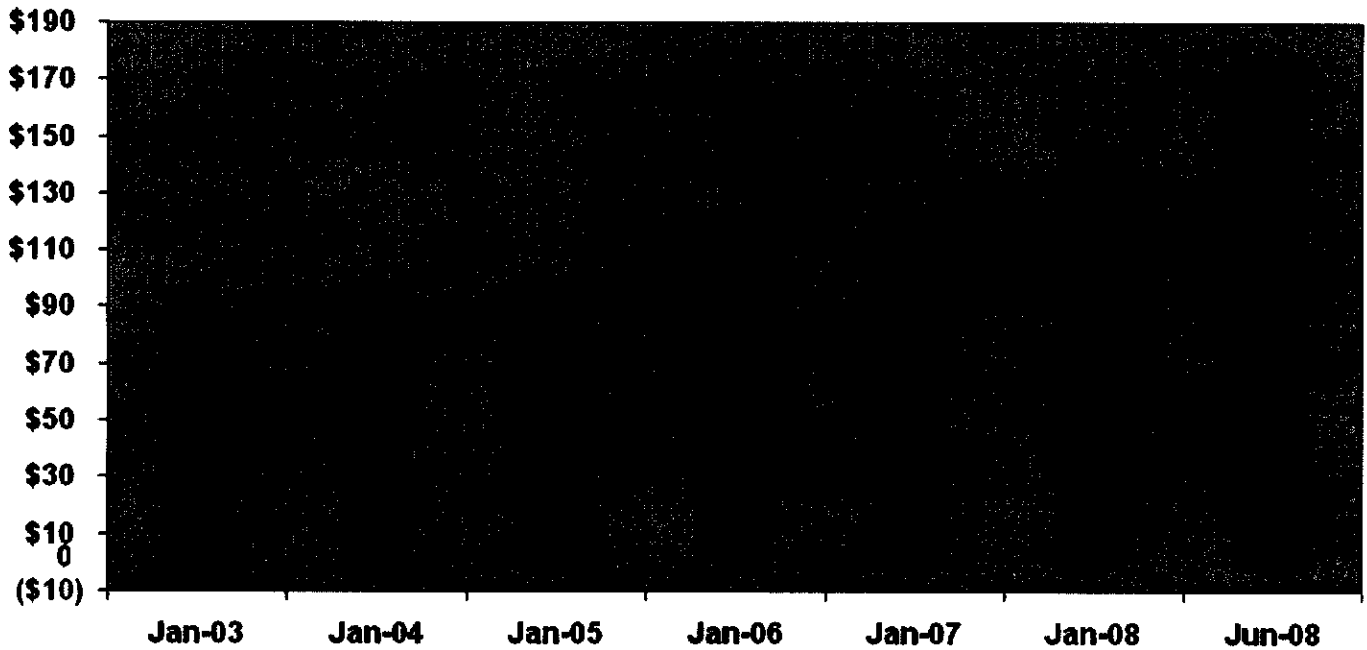


Electric Bill Charge Breakdown

Here's an overview of the monthly charges you see on your residential electric bill and the impact the energy crisis has had on rates. We've also provided a description of what each charge covers.

Average Monthly Residential Bill

750 kWh



■ Customer Charge - no change ■ Energy Charge - up \$17 ■ Fuel Adjustment - up \$72

Customer Charge

- Customer service
- Billing
- Meter reading

No increase (2003-08)

Energy Charge

- Portion of fuel
- Power plants
- Administration
- Substations
- Wires and poles
- Transformers
- Interest


\$17 increase (2003-08)

Fuel Adjustment

- Fuel to generate electricity & to purchase power

\$72 increase (2003-08)



Your Touchstone Energy Cooperative 

PO Box 71249 Fairbanks AK 99707 • (907) 452-1151 • 1-800-770-GVEA • www.gvea.com

**Golden Valley Electric Assoc. 2008 Electric System Rate Study
Current, Cost of Service and Proposed Rates (Draft)**

Residential

	Current	Cost of Service	Proposed
Customer Charge (\$/month)	\$15.00	\$20.87	\$17.50
Energy Charge (\$/kWh)	0.11389	0.08547	0.08134
Fuel and Purchased Power Charge (\$/kWh)(1)	0.08877	0.13290	0.13007
Percent Rate Change - Normalized 2007 TY Results		13.7%	7.0%

GS-1 Small Commercial

	Current	Cost of Service	Proposed
Customer Charge (\$/month)	\$20.00	\$21.74	\$20.00
Energy Charge (\$/kWh)	0.11189	0.07730	0.08090
Fuel and Purchased Power Charge (\$/kWh)(1)	0.08877	0.13282	0.13007
Percent Rate Change - Normalized 2007 TY Results		6.4%	6.4%

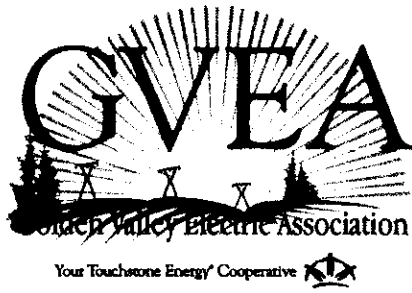
GS-2 Large Commercial (2)

	Current	Cost of Service	Proposed
Customer Charge (\$/month)	\$56.38	\$32.38	\$30.00
Energy Charge (\$/kWh)			
0-15,000 kWh	0.09927	0.01391	0.04244
Over 15,000 kWh	0.07762	0.01391	0.04244
Fuel and Purchased Power Charge (\$/kWh)(1)	0.08877	0.13205	0.13007
Demand Charge (\$/kW)	\$9.03	\$19.99	\$10.24
Demand Ratchet	70%	70%	70%
Percent Rate Change - Normalized 2007 TY Results		3.0%	3.0%

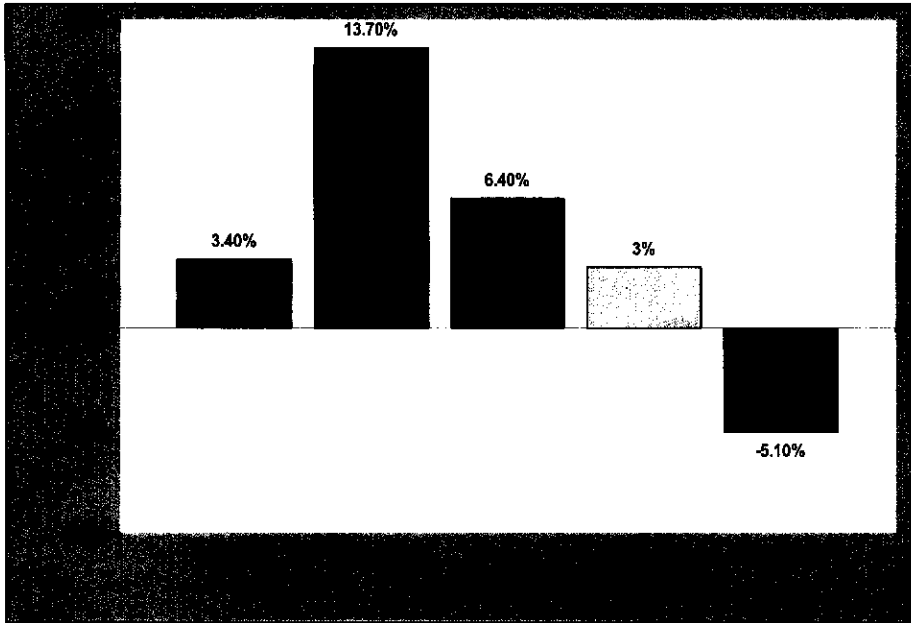
GS-3 Industrial (3)

	Current	Cost of Service	Proposed
Customer Charge (\$/month)	\$180.00	\$306.02	\$300.00
Energy Charge (\$/kWh)	0.06495	0.01340	0.02057
Fuel and Purchased Power Charge (\$/kWh)(1)	0.08877	0.12914	0.13007
Demand Charge (\$/kW)	\$14.06	\$17.04	\$16.00
Percent Rate Change - Normalized 2007 TY Results		-5.1%	0.0%

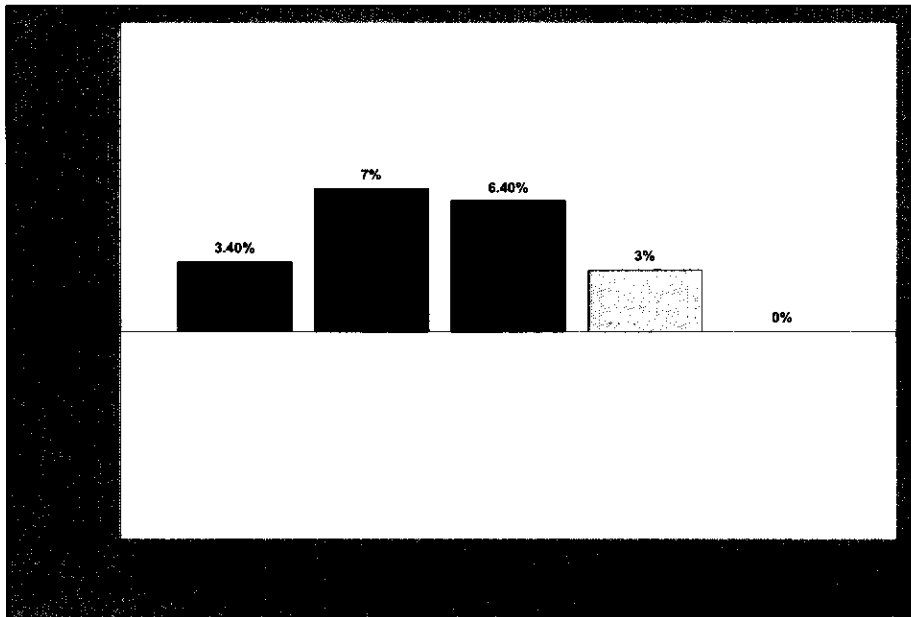
- (1) Adjusted from 2007 TY cost of service levels to be consistent with June 1, 2008 COPA charge of 8.877 cents/kWh.
- (2) Existing GS-2(1) and GS-2(2) classes combined.
- (3) Existing GS-2(3) customer class.



Preliminary Cost of Service Results Per Class



Proposed Average Rate Increases Per Class



Questions or comments can be emailed to info@gvea.com.